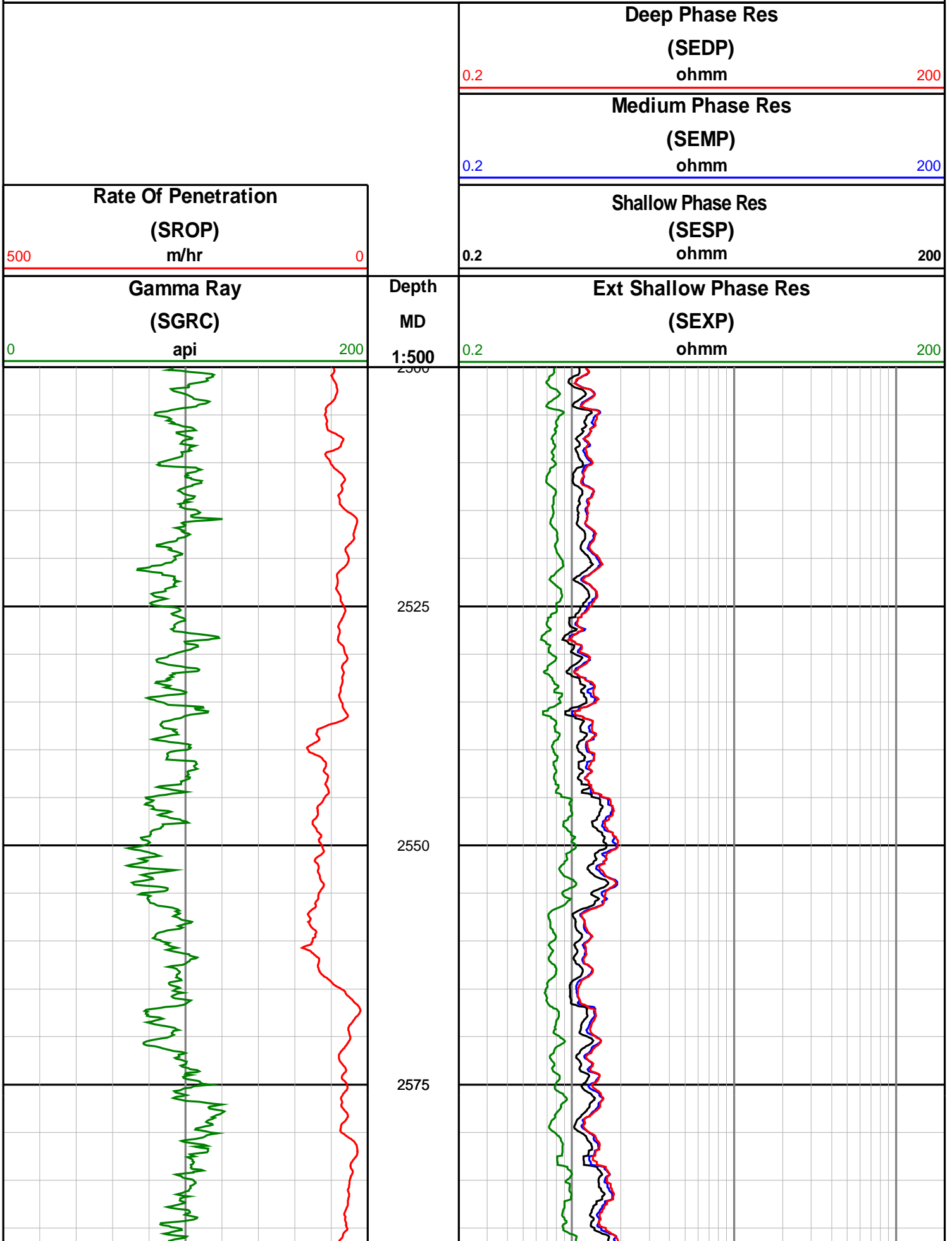
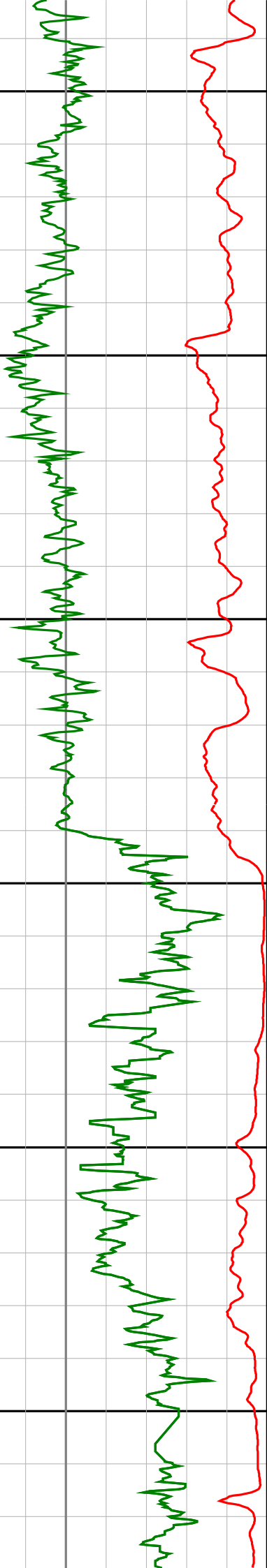


# Anzon Australia Ltd

## Basker-3

Realtime/Recorded LWD Log (Permanent Datum - LAT)





2600

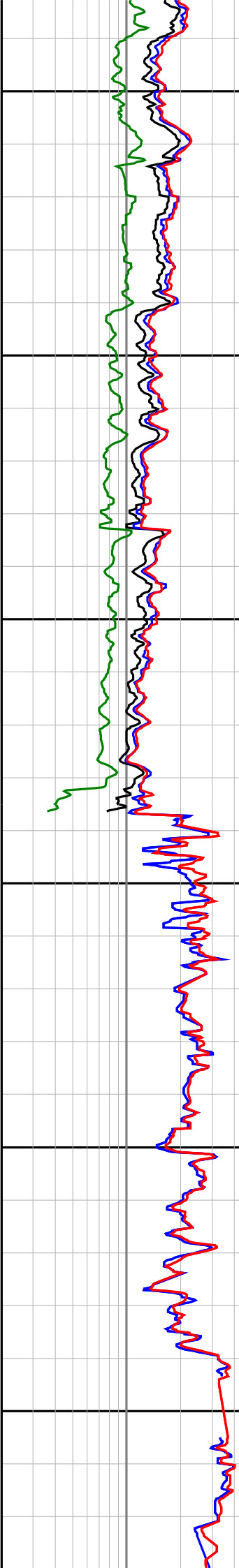
2625

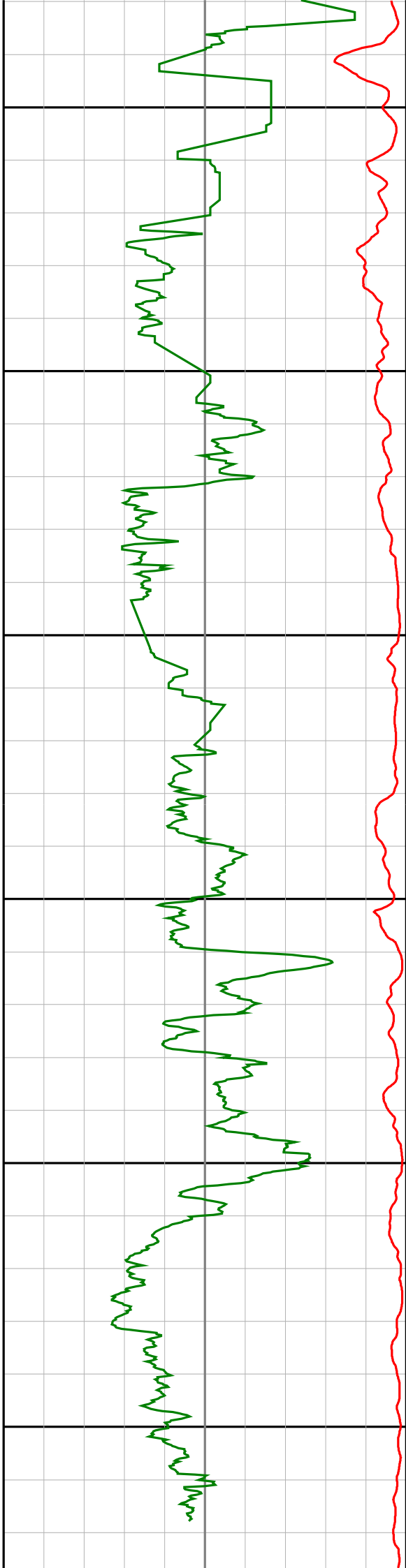
2650

2675

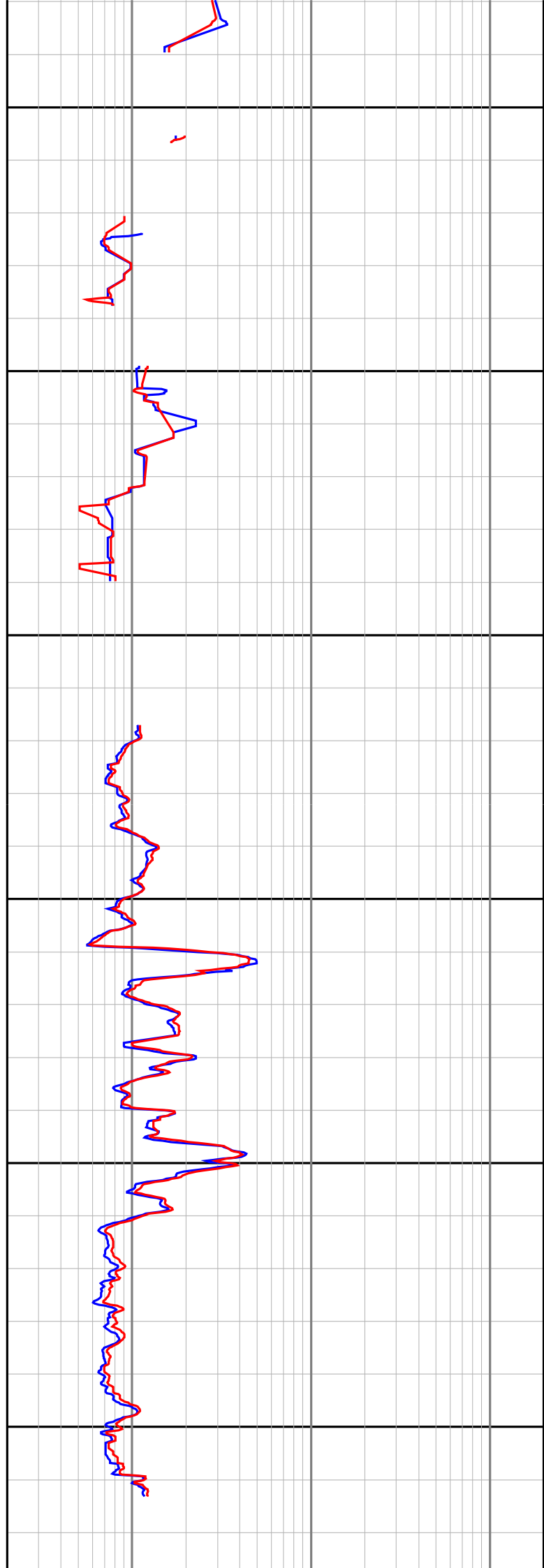
2700

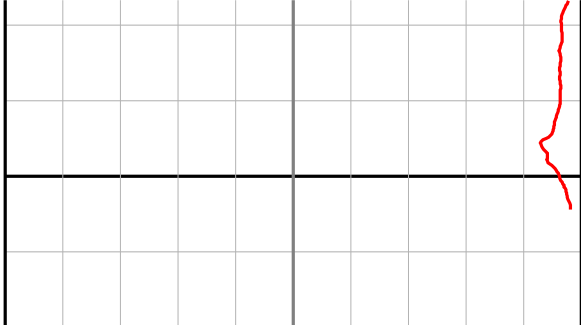
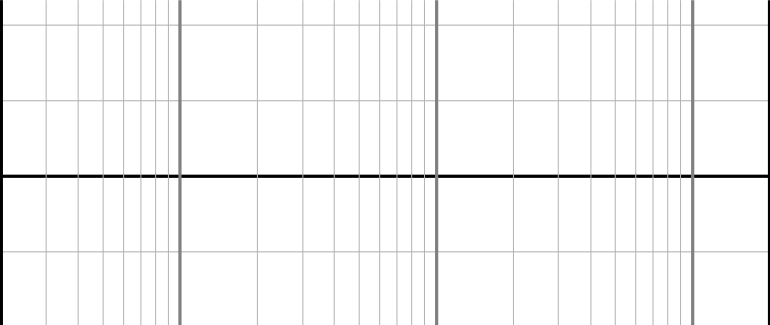
2725





2750  
2775  
2800  
2825  
2850  
2875



	2900	
<p style="text-align: center;"><b>Gamma Ray (SGRC)</b> api</p> <p>0 <span style="float: right;">200</span></p>	<p style="text-align: center;"><b>Depth MD</b> 1:500</p>	<p style="text-align: center;"><b>Ext Shallow Phase Res (SEXP)</b> ohmm</p> <p>0.2 <span style="float: right;">200</span></p>
<p style="text-align: center;"><b>Rate Of Penetration (SROP)</b> m/hr</p> <p>500 <span style="float: right;">0</span></p>		<p style="text-align: center;"><b>Shallow Phase Res (SESP)</b> ohmm</p> <p>0.2 <span style="float: right;">200</span></p>
		<p style="text-align: center;"><b>Medium Phase Res (SEMP)</b> ohmm</p> <p>0.2 <span style="float: right;">200</span></p>
		<p style="text-align: center;"><b>Deep Phase Res (SEDP)</b> ohmm</p> <p>0.2 <span style="float: right;">200</span></p>